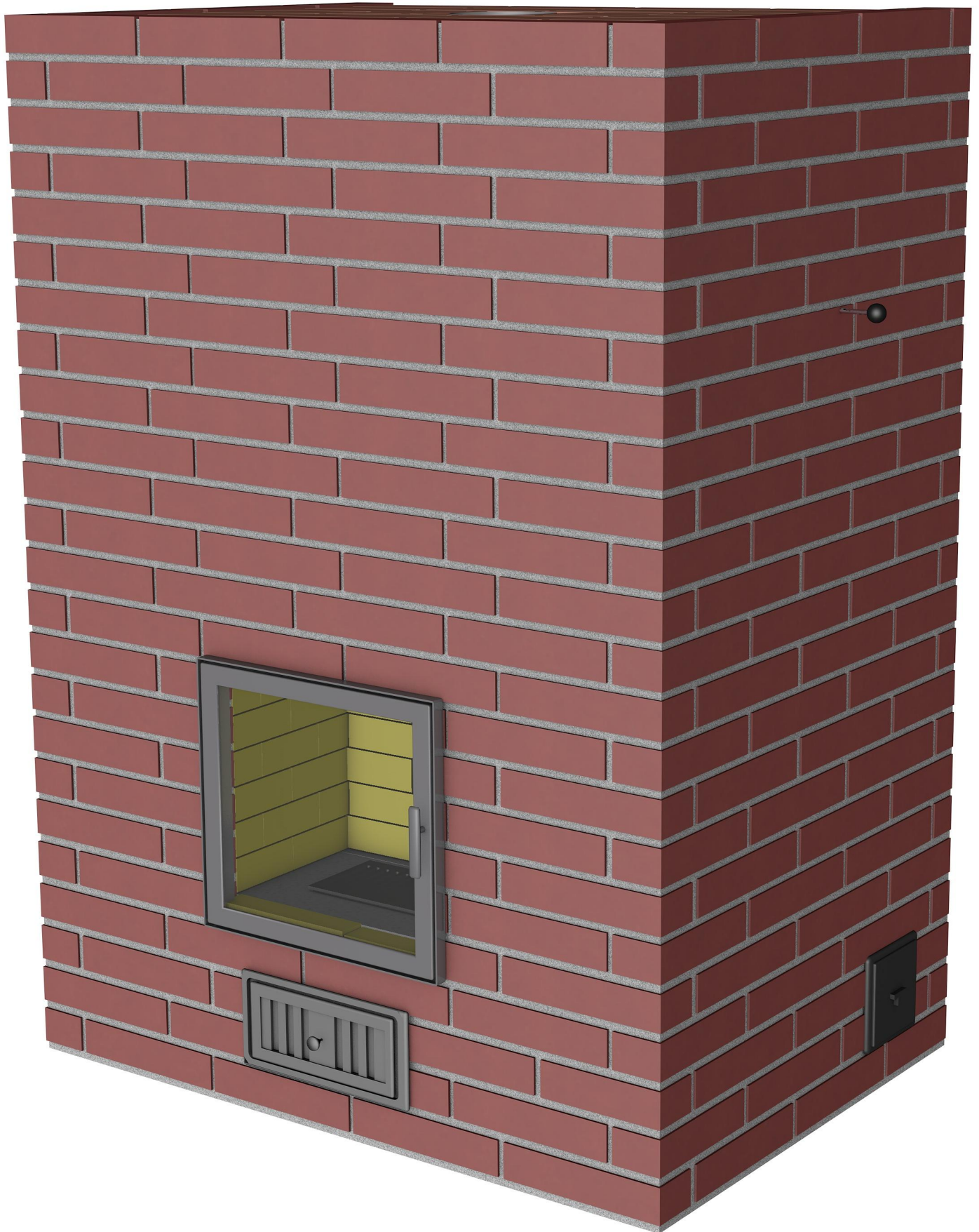
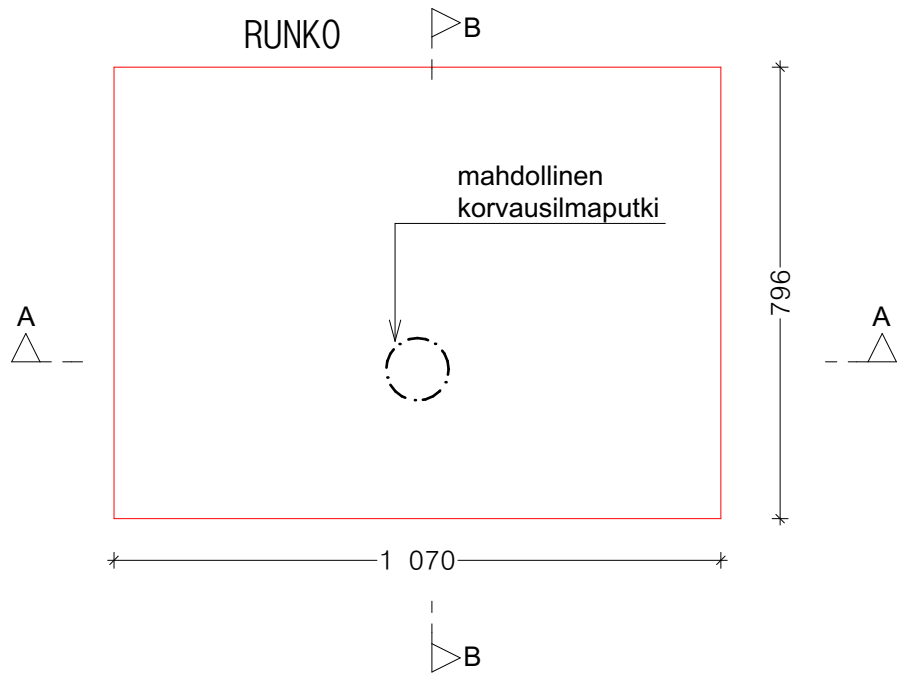


MATALA TAKKA 1200 PÄÄLILITTYMÄ

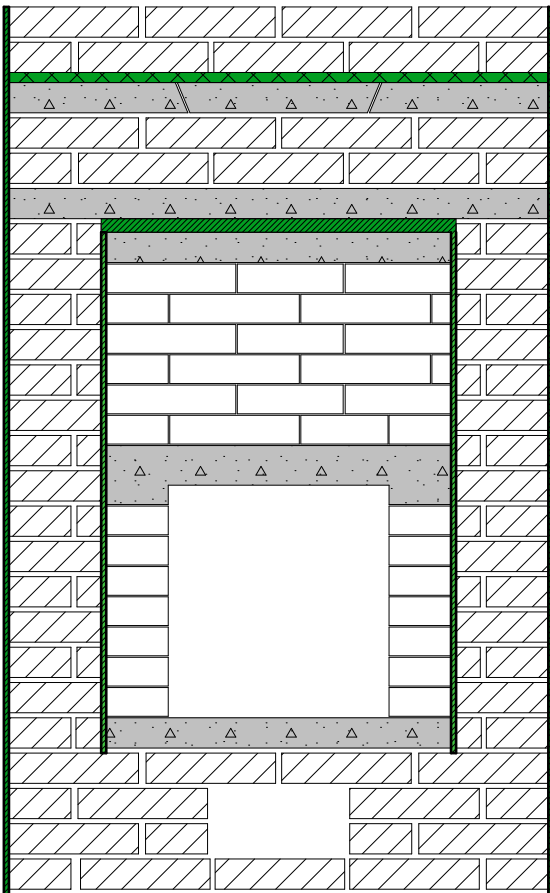


MATALA TAKKA 1200 PÄÄLILITTYMÄ



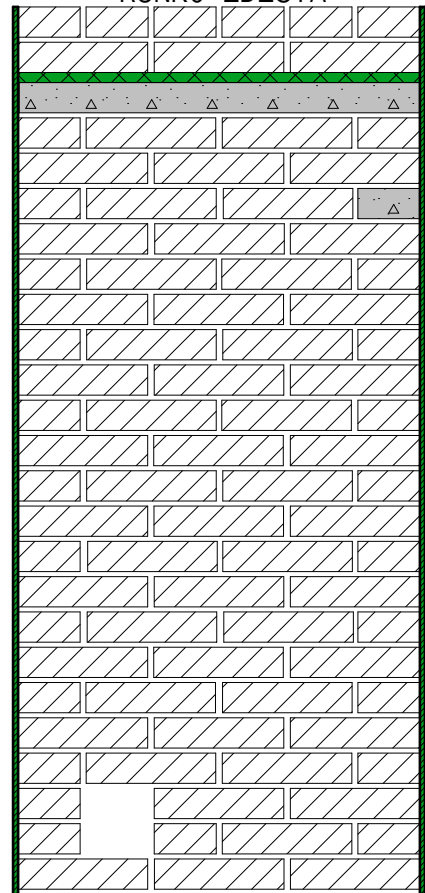
1:15

RUNKO EDESTÄ

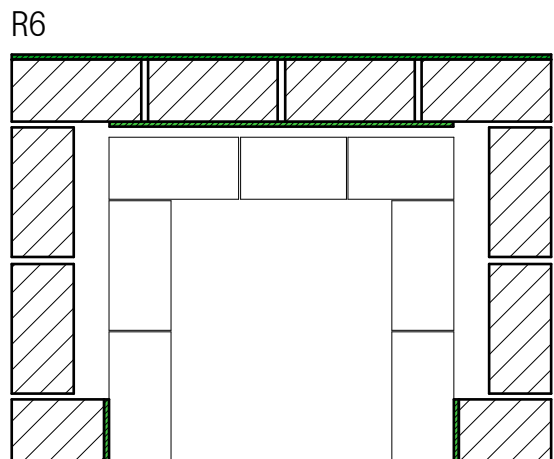
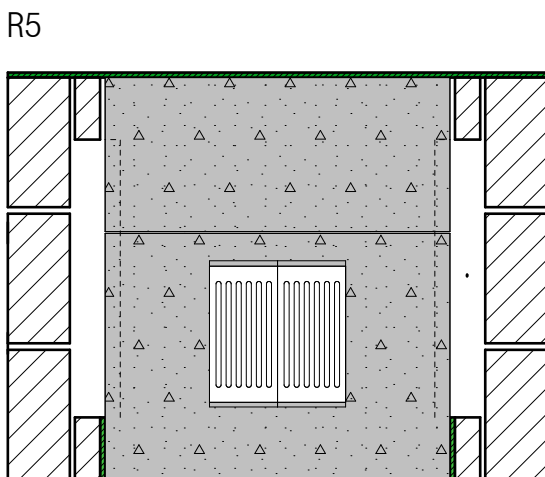
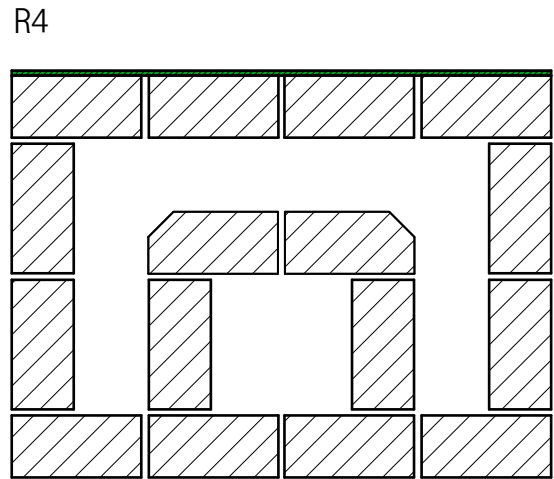
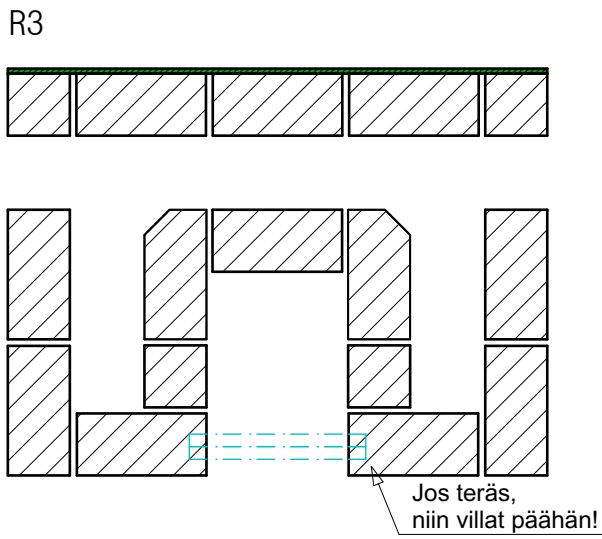
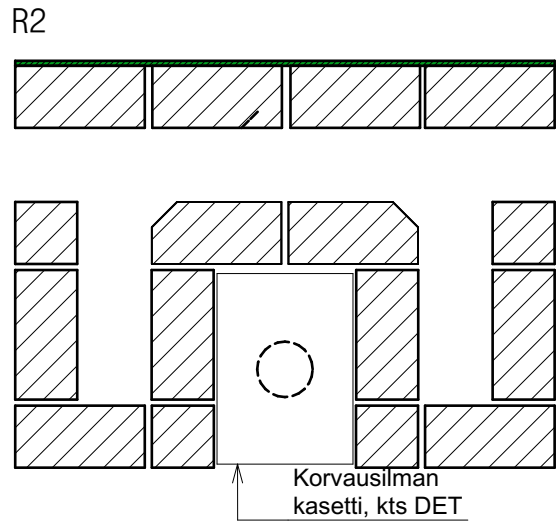
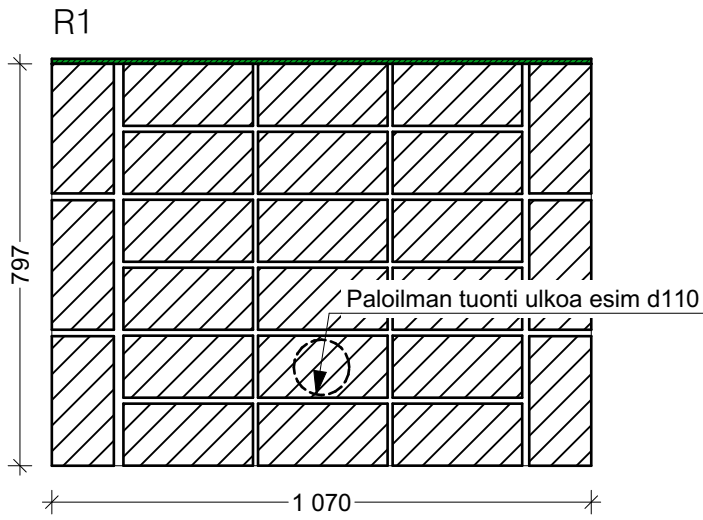


1:15

RUNKO EDESTÄ

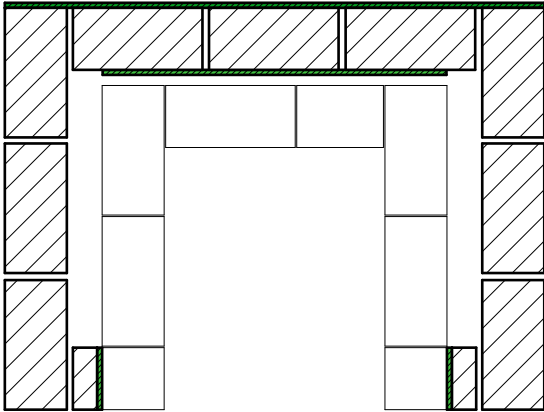


MATALA TAKKA 1200 PÄÄLILITTYMÄ

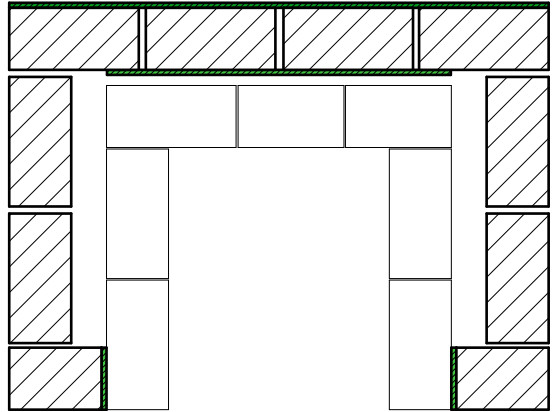


MATALA TAKKA 1200 PÄÄLILITTYMÄ

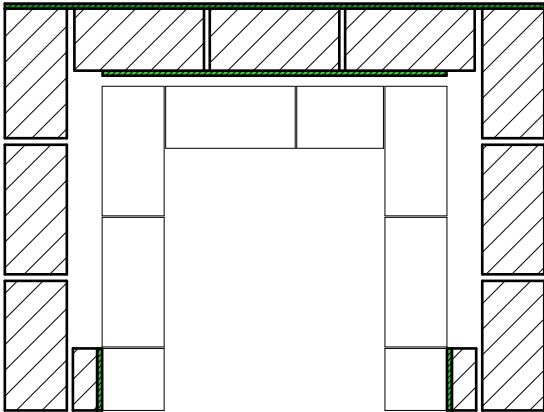
R7



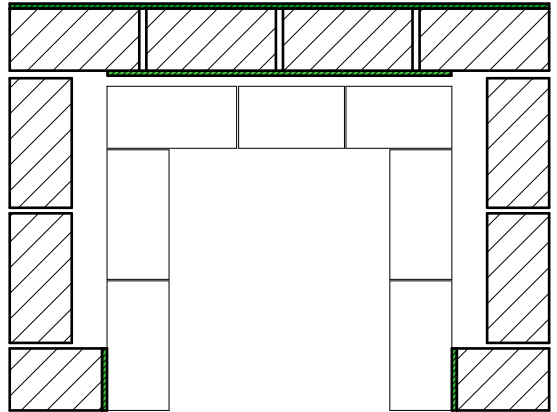
R8



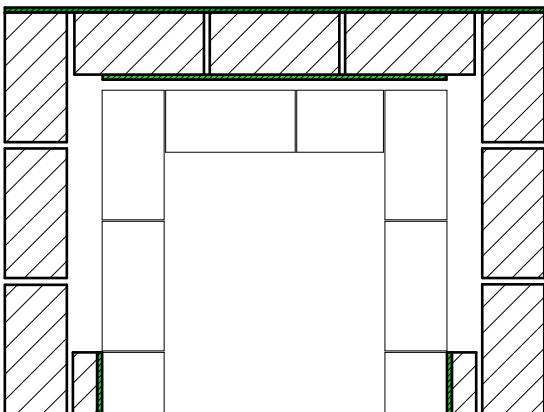
R 9



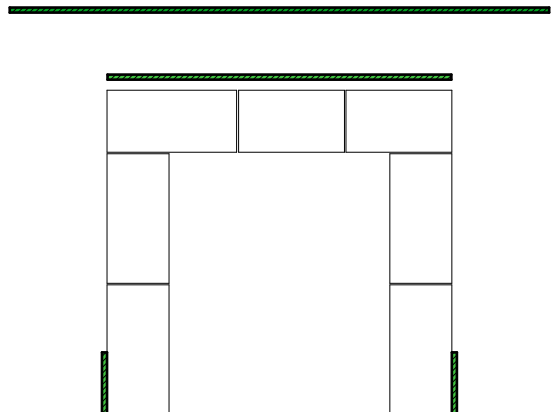
R 10



R 11

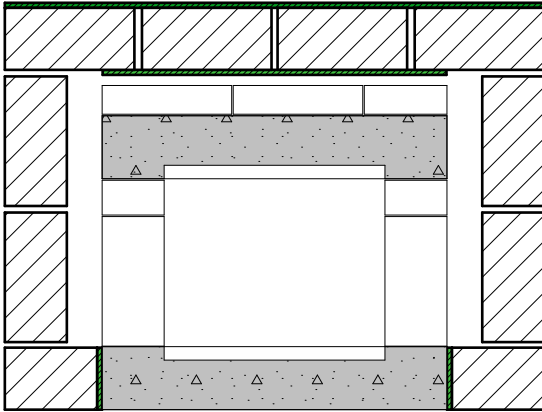


R 11 B

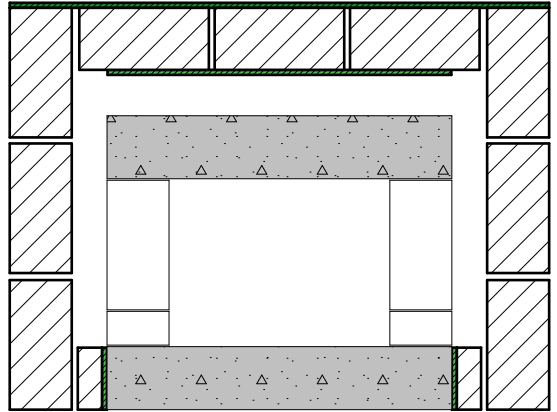


MATALA TAKKA 1200 PÄÄLILITTYMÄ

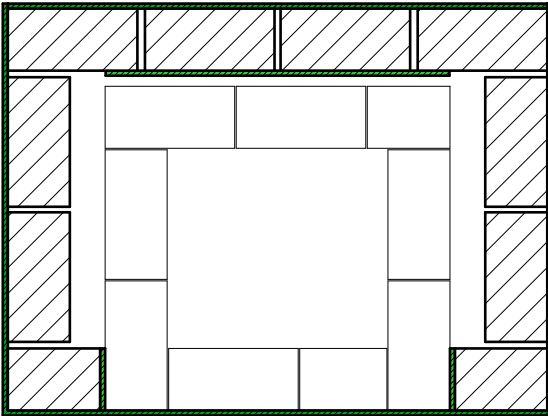
R 12



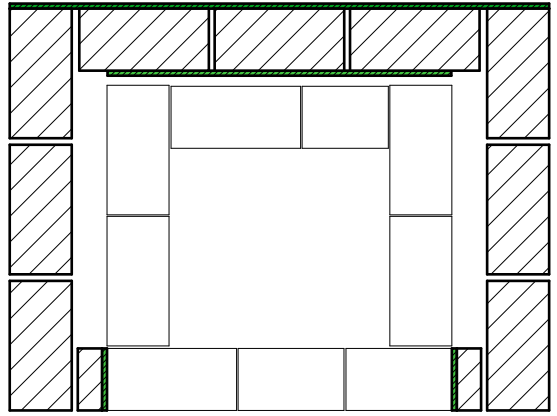
R 13



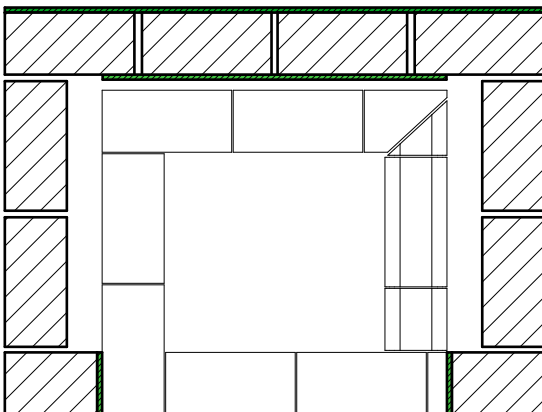
R 14



R 15

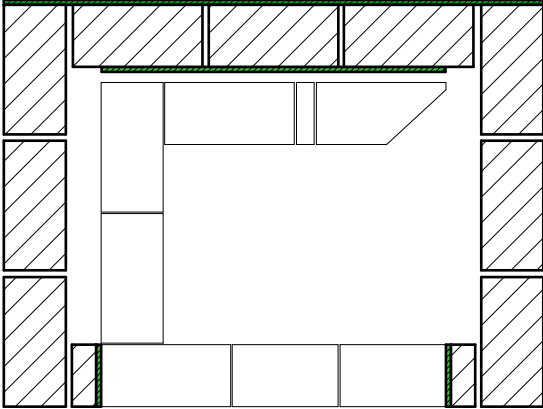


R16

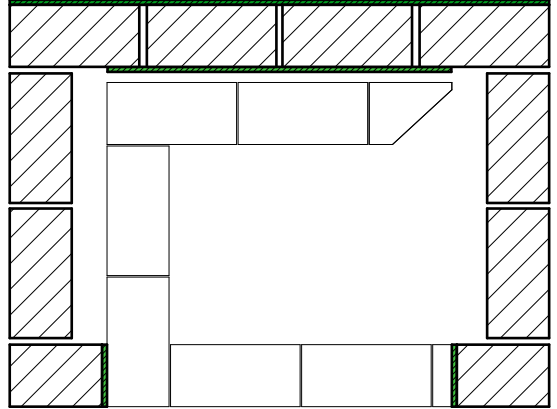


MATALA TAKKA 1200 PÄÄLILITTYMÄ

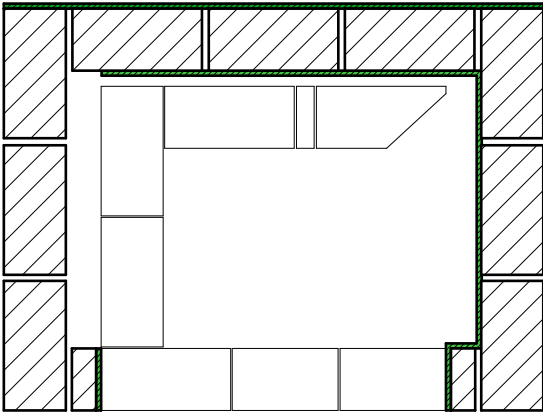
R 17



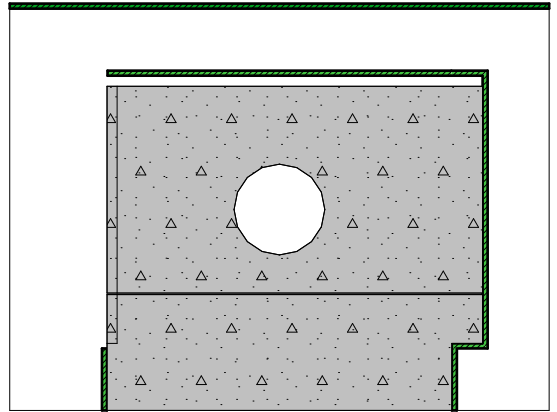
R 18



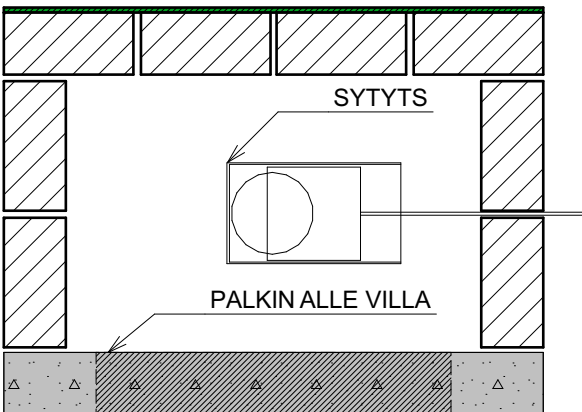
R 19



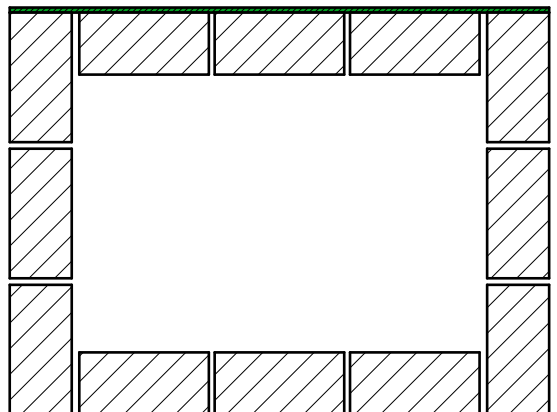
R 19 B



R 20

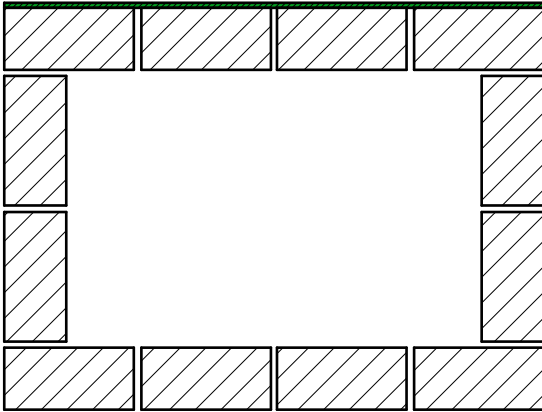


R 21

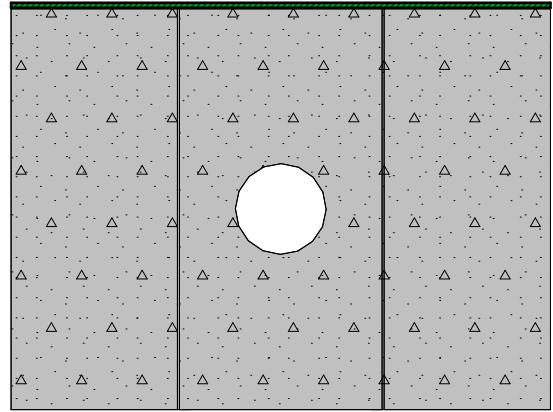


MATALA TAKKA 1200 PÄÄLILIIITYMÄ

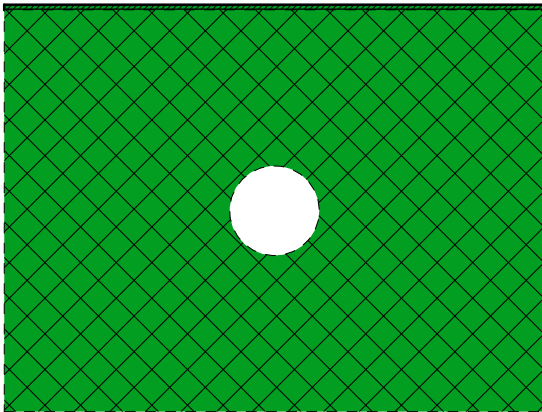
R 22



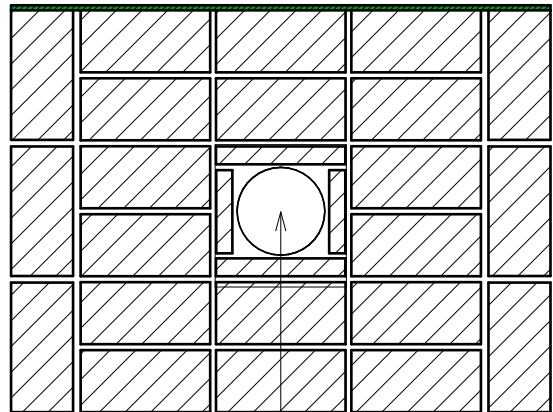
R23



R24

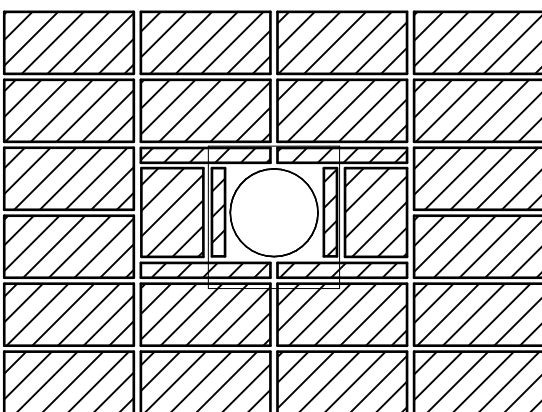


R25



YLÄLIITOSMUHVI 27 ja
28 VÄLIIN !

R26

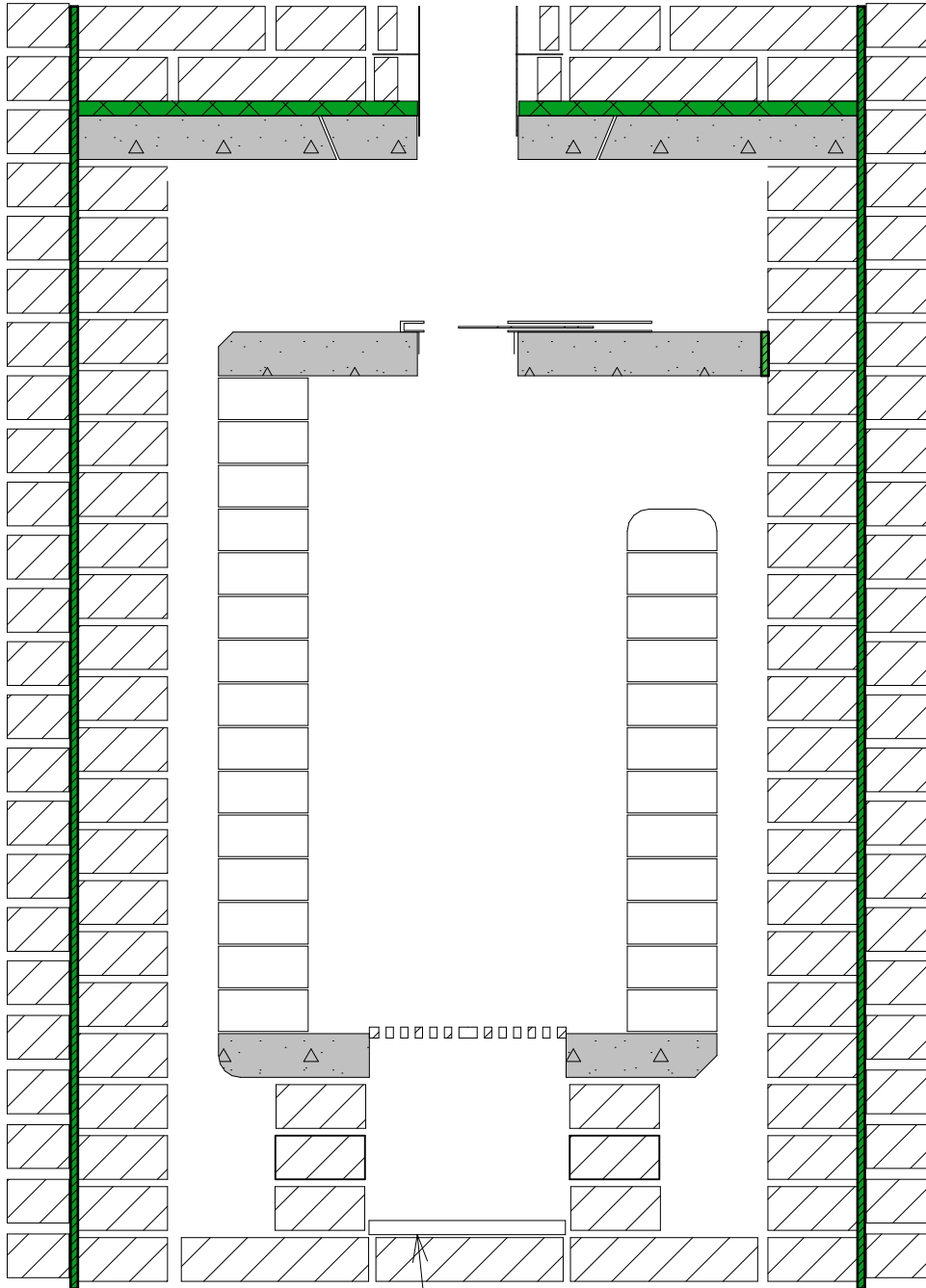


MATALA TAKKA 1200 PÄÄLILIIITYMÄ

A

Leikkaus

1:10



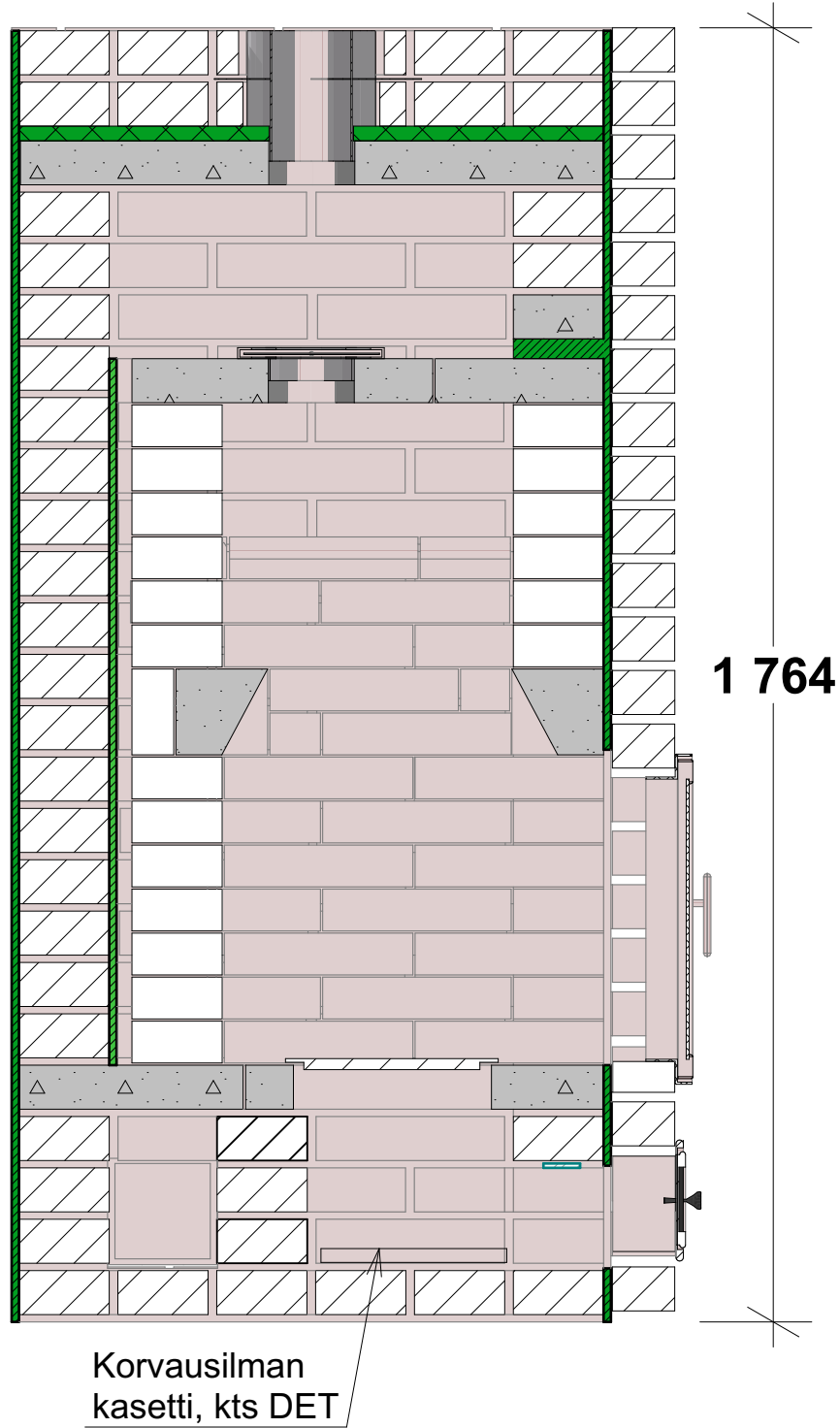
Korvausilman
kasetti, kts DET

MATALA TAKKA 1200 PÄÄLILIIITYMÄ

B

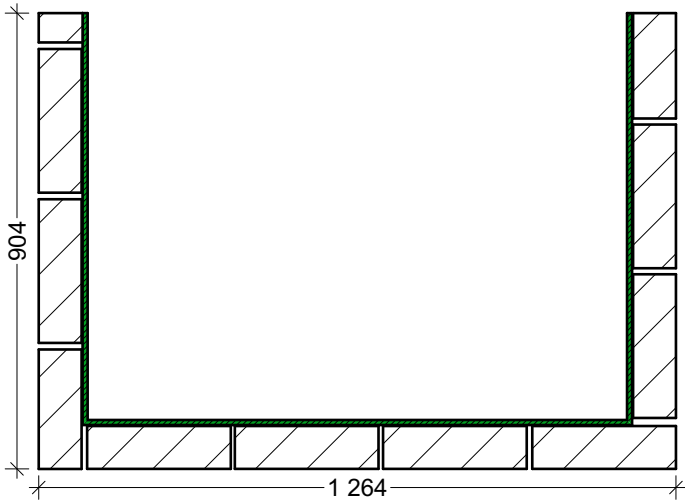
Leikkaus

1:10

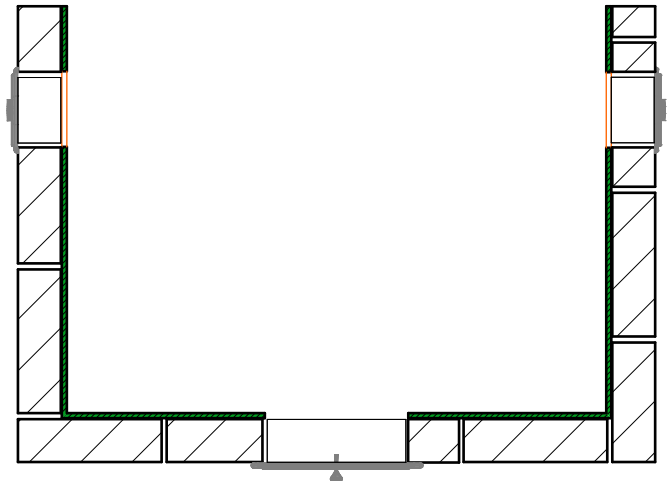


MATALA TAKKA 1200 PÄÄLILITTYMÄ

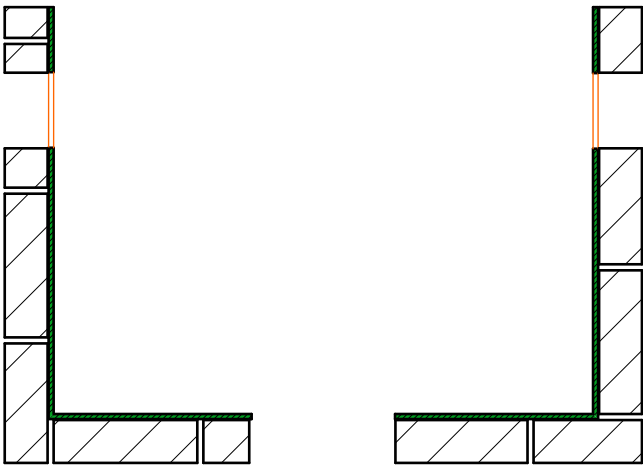
K 1,11,13,15,17,19,21,23



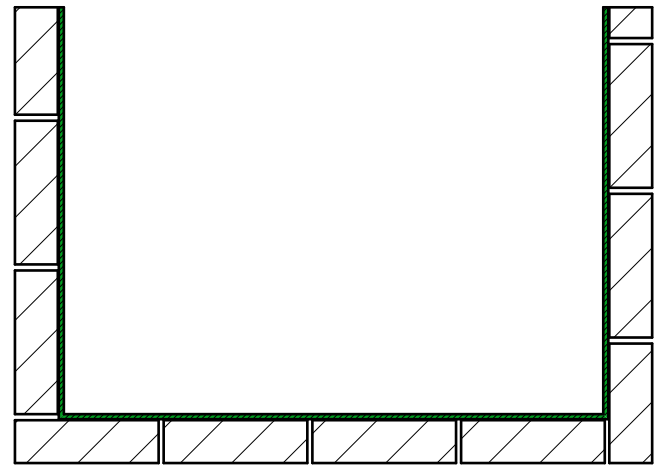
K 2



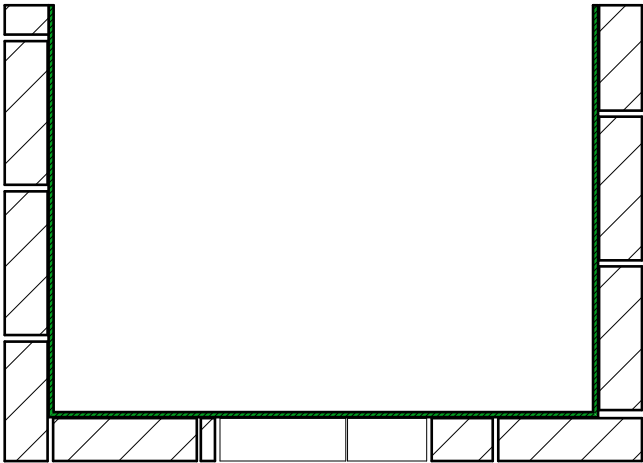
K 3



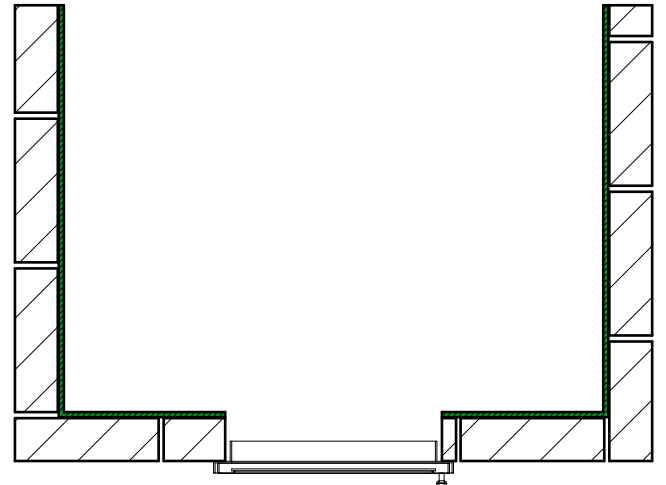
K 4



K 5

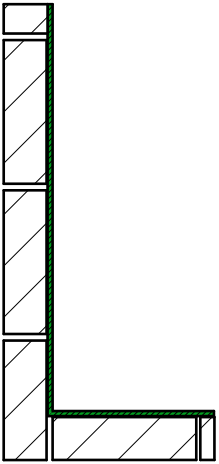


K 6,8,10

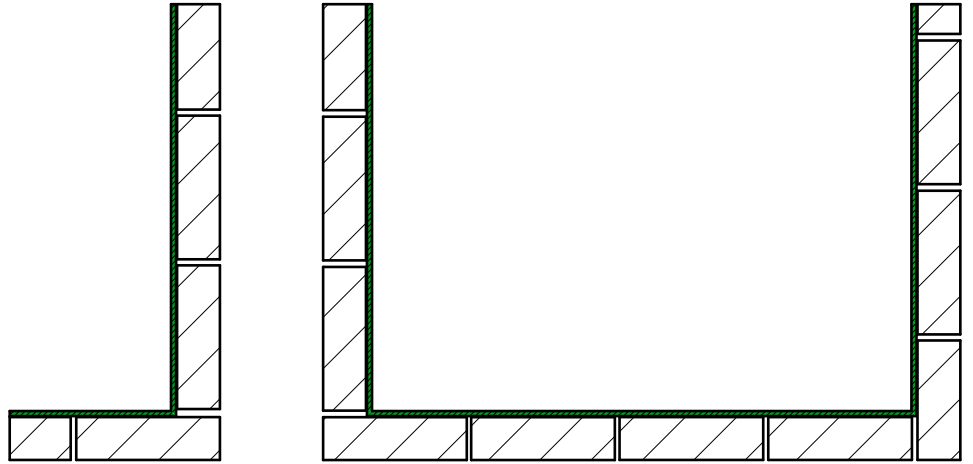


MATALA TAKKA 1200 PÄÄLILIIITYMÄ

K 7,9



K 12,14,16,20,22,24

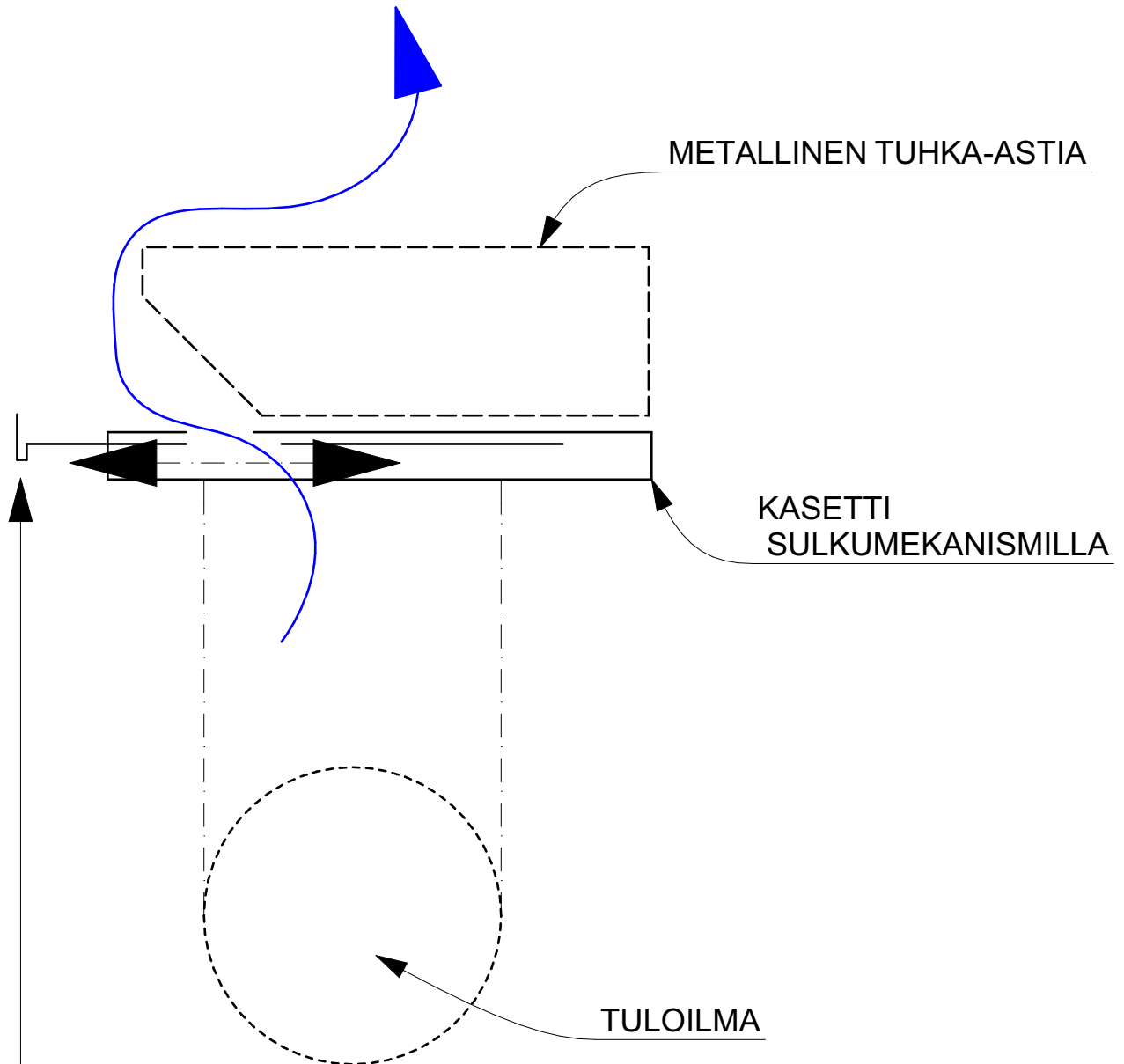


MATALA TAKKA 1200 PÄÄLILIIITYMÄ

MATALA TAKKA 1200 TARVIKELUETTELO		
Tarvikkeen ID	Määrä	H U O M
1B	2	
Aukko	4	REIKÄ
Latta	1	Tarvittaessa
MRT60	266	ML5 kpl*1,0 kg
MTT257	2	ulenkestävä ML kpl* 0,3 kg
MUF 175	1	
NUL	2	Nuohousluukku
NUOHOUSHOLKKI (T)	2	Vastaava muurausholkki
PAL 20	1	1,5m ²
PT257	315	Savilaasti kpl *1,0 kg
Suuluukku	1	
SYTYTYSKEHYS175	1	
SYTYTYSVARSI 175	1	
TTT257	109	Tulenkestävä ML kpl* 0,3 kg
TUHKALAATIKON HOLKKI (T)	1	Muurausholkki
TUL10	1	
TUL 10	1	
TUL 10	7	~8 m ² Tulisijalevy TUL 10
TUL 11	1	
TUL 12	1	
TUL RAUTA	1	270x130 Tuhkaluukun ovi
V1	1	
V2	1	Valuosat 1->
V3	2	Tulenkestävä VM 102,00 LTR
V4	1	
V5	2	
V6	1	

MATALA TAKKA 1200 PÄÄLILIIITYMÄ

ILMANOTON OHJAUKSEN PERIAATEKUVA



Peitekasetissa esim. eteen/taakse
liuúttavissa ja suljettavissa
oleva sulkumekanismi